

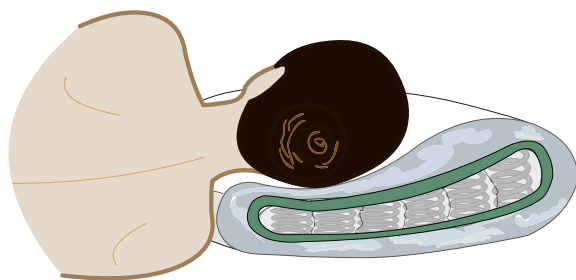
The DUX Xleep Pillow

WHAT SWEET DREAMS ARE MADE OF

The DUX Xleep pillow incorporates a revolutionary supple inner spring system. It is encased in a down filled removable cover.

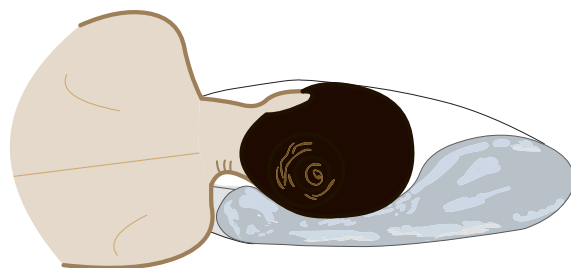


EXPERIENCE THE DUX DIFFERENCE



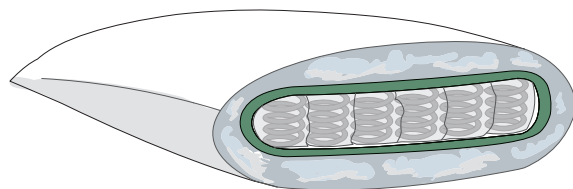
>> DUX Xleep pillow support

In the DUX Xleep Pillow, the spring core allows your head to sink in just enough so that it remains level with the spine.



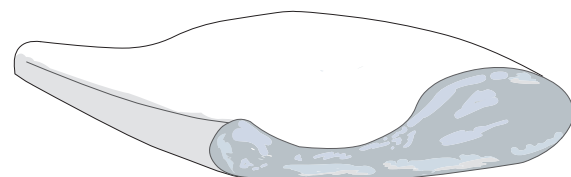
>> Regular pillow support

With a regular pillow, your head isn't well supported, and sinks too deeply.



>> DUX Xleep pillow shape

The active spring support of the DUX Xleep Pillow keeps it firm over time, allowing it to retain its supportive, yet stable shape.



>> Regular Pillow shape

Regular pillows, on the other hand, form indentions and pockets, and flatten over time.

DIMENSIONS AND SPECIFICATIONS

North American Sizes:

- Standard: 20 x 28"
- Queen: 20 x 30"
- King: 20 x 36"

The DUX Xleep pillow cannot be ordered in custom sizes.

DUX, The DUX Bed, DUXIANA and Xleep are Trademarks or Registered Trademarks of DUX DESIGN, AB. All rights reserved © 2007. DUX reserves the right to change product specifications without notice.